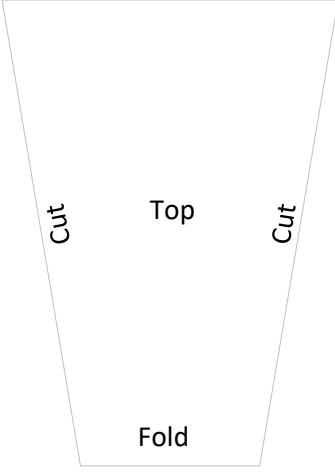


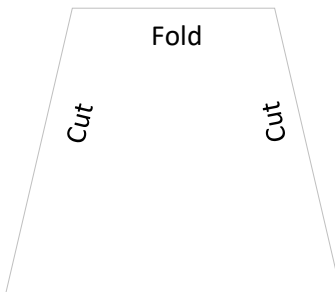
Instructions: 1) print papercraft, 2) cut lines and fold top and bottom tags (top tag is 1 inch longer to accommodate various pens), 3) attach pen to top fold and wrap cover around journal, 4) insert front tabs into journal and tape in place, 5) insert back tabs into journal without tape. Close journal



### Front

Margins: Top & Bottom = 1.38 inches  
Left & Right = 0.5 inches

Notes: Cardstock works best; line up bottom fold with bottom of journal for proper fit; easy installation if you use 2 pens during taping; you can print text or images over the papercraft with a word processor by using the margins above



Pencil/penholder papercraft © 2016  
www.laaryjc.com @ - @laaryjc - laaryjc  
Path of Faith : John 3:3, 14:6, Romans 3:23, 6:23, 10:9